

**Secure Bespoke Modular Buildings**

**Our know-how secures your activities**

- Modular Bank Buildings, Sale or Rental
- ATM Kiosks
- Toll Booths
- Buildings or Maxi Cabins
- Technical Buildings or Stations
- Fixed or Mobile Premises
- Security Buildings
- Sentry Boxes
- Guardhouses
- Blast Resistant Buildings

# CONTENTS

<b>Secure Bespoke Modular Buildings</b>	<b>03</b>
<b>Module Rental</b>	<b>07</b>
<b>Sentry Boxes</b>	<b>11</b>
<b>Security Buildings</b>	<b>15</b>
<b>Technical Buildings</b>	<b>19</b>
<b>Analysis Stations</b>	<b>23</b>
<b>Blast Proof</b> <i>by Modulo Protect</i>	<b>27</b>

# SECURE BESPOKE MODULAR BUILDINGS

- Vandal proof
- Intrusion proof
- Bullet proof
- Fire resistant
- Blast resistant



**DO YOU REQUIRE  
FULLY EQUIPPED,  
SECURE, QUICK-BUILD  
PREMISES FOR YOUR  
STAFF?**

Modulo Protect specialises in the design, construction and integration of secure modular buildings that integrate seamlessly into your environment and can evolve with your company.

## **MODULAR PREFABRICATED BUILDINGS: THE FLEXIBLE CHOICE.**

Your modular prefabricated building can be altered according to your requirements, space and site.







**Blast Resistant Building**



**ATM Kiosk**

We manufacture several building types: basic, vandal proof, intrusion proof, bullet proof and even blast proof.

All our buildings meet the current French and European standards, e.g. EN 1267/1630, EN 356, EN 1522 and EN 1063.

The components integrated into our modules are laboratory tested.

Calculation notes are used to design and certify the blast resistant buildings.

## FROM YOUR PROJECT'S INCEPTION, MODULO PROJECT IS YOUR PARTNER

### IN THE CREATIVE DESIGN OF

workspaces that are attractive, adaptable, comfortable and efficient, heat and cold resistant to machine room standards and resistant to RT 2012 standards in the case of staff premises.



**Architectural design**

**Bespoke cladding**

**Large toll booth**

## MODULAR CONSTRUCTION

All modular buildings are made from single, freestanding, joinable and stackable (up to two levels) units that can be easily and quickly dismantled for transfer to another site. The accessibility study is integrated in the project from the beginning.



**Rented bank branch office**



**Custom designed furnishings**

**Comfortable and user-friendly**

## FROM DESIGN TO DELIVERY, WE TAKE CARE OF EVERYTHING.

Backed up by high-quality, efficient logistics, Modulo Protect designs and manufactures buildings for all strategic locations that require security.

A pre-acceptance inspection is usually organised in-plant and we sign a PPSPS (Specific Health and Safety Plan) in which we commit ourselves to the delivery and assembly of our modules by the specified date and within the shortest possible time. A project file with Autodesk drawing files is supplied to the customer during the final acceptance procedure.

## MADE TO MEASURE ACCORDING TO YOUR SPECIFICATIONS

Several types of cladding are available: sheet metal, aluminium, stainless steel, wood, ceramic or other materials, depending on your architectural requirements. Fittings such as canopies and signs can be added to match your company's identity.

All types of interior layout are available and we will design and suggest various solutions to fully optimise the available space according to the level of proofing needed as well as your other requirements.

In order to supply you with a fully fitted, turnkey building, Modulo Protect pre-integrates safes, alarm systems, access control and CCTV.

Furnishings are customised and meet all specified requirements. The WCs and kitchenettes fit naturally into the spaces.

Calculation notes are used to design the heating, air conditioning and natural or pressurised ventilation.

Electrical, IT and telecommunications equipment is pre-cabled and inspected by an approved body.



High-quality after-sales service from a network of partners via our hotline.



**Sentry Box**





**An alternative to traditional building**

**Quick and inexpensive**

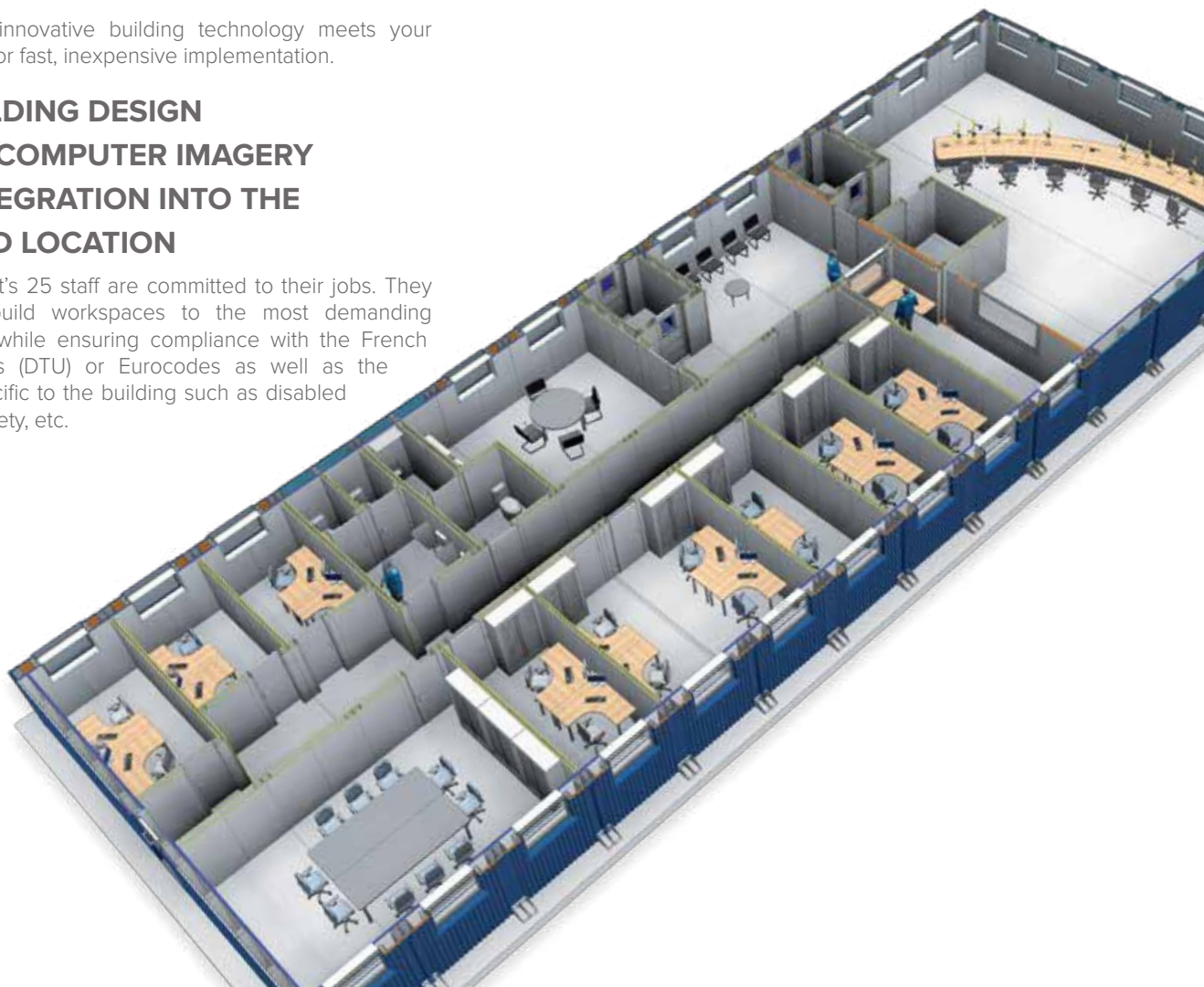
**Short installation time**

**Technical Building**

Our modern, innovative building technology meets your requirements for fast, inexpensive implementation.

## **OUR BUILDING DESIGN USES 3D COMPUTER IMAGERY WITH INTEGRATION INTO THE INTENDED LOCATION**

Modulo Protect's 25 staff are committed to their jobs. They design and build workspaces to the most demanding specifications while ensuring compliance with the French building codes (DTU) or Eurocodes as well as the standards specific to the building such as disabled access, fire safety, etc.



# MODULE RENTAL



**MODULES**  
**FOR YOUR PEACE**  
**OF MIND**



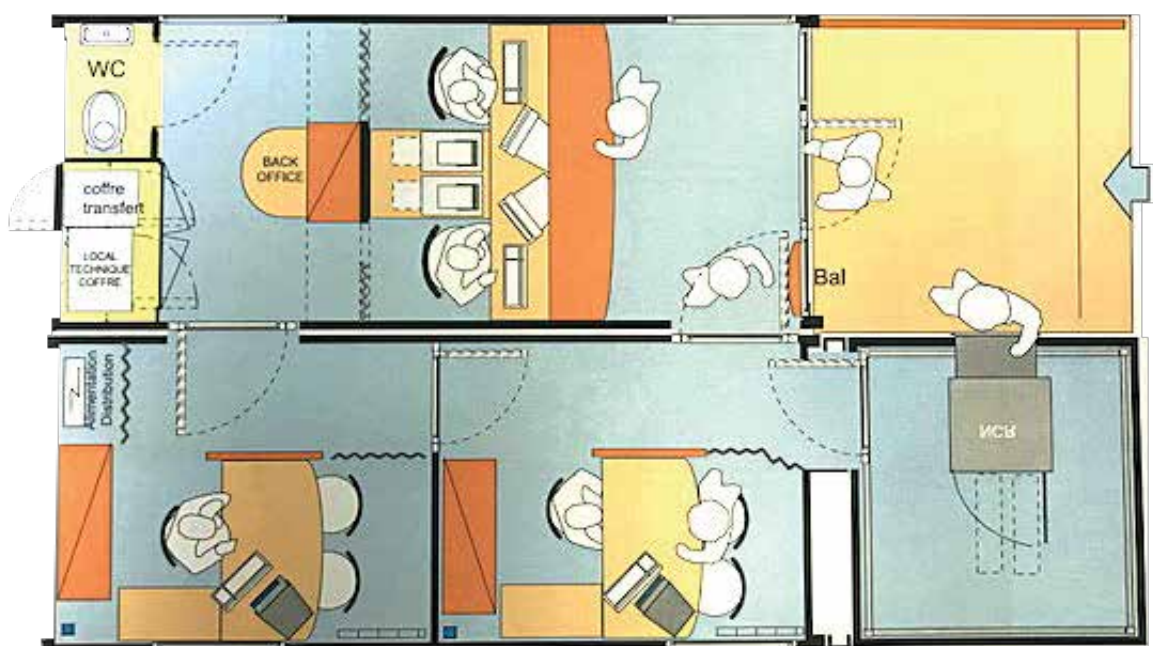
# RENTAL OF MODULAR BUILDINGS

## SECURE RENTALS

We mainly rent modules for banking and industrial purposes and even ticket machines or vending points.

Our rental modules are made to measure and altered according to your premises and requirements.

To guarantee your security, rental modules can be intrusion-proofed and armoured according to your requirements. They comply with the standards applicable to premises for public use such as fire safety and disabled access.



Our rental equipment\* (*subject to module availability*) includes:

- counter modules, office modules, armoured kiosks, security entrance modules, spiral staircases, outdoor straight staircases, etc.



## APPLICATIONS:

- Industry
- Banking
- Rental of ticket machines or vending points for public areas

### PRE-FITTED, TURNKEY SOLUTIONS

Our rental modules are fitted and assembled in-plant and supplied in fully integrated condition for quick commissioning.

They include:

- all furnishings required for each workstation (counter, cupboard), all IT, phone and alarm pre-cabling (with or without a Sintony F410-type central unit). This means you can start working soon at full capacity.

The modules are joinable and stackable (up to two levels), and their size and the flexibility of their joints mean they can be integrated into any site.

### STANDARD SIZES THAT ARE ALSO COMFORTABLE AND ADAPTABLE

The various module versions can be used to meet your site-specific requirements in terms of size and function.

The standard sizes are:

Modules: 6200 x 2483 x 2900

Kiosks: 2500 x 2500 x 2900

They include a WC area, air conditioning, heating and business-appropriate lighting.



## INTERIORS:

All types of interior layout are available and we will design and suggest various solutions to fully optimise the available space according to your requirements

(safe, alarm system, access control, aircon, IT and phone pre-cabling, WC, etc.).





- Industry
- Banking

- Rental of ticket machines or vending points for public areas.

# SENTRY BOXES



**FOR PROTECTION AGAINST THE WEATHER  
AND TOTAL SECURITY**



# SENTRY BOXES

## SECURE PREFABRICATED BUILDINGS



### FOR PROTECTION AGAINST THE WEATHER AND TOTAL SECURITY

Despite their small size, sentry boxes and checkpoints need to be comfortable, enable security staff to monitor access points and match the sensitivity of the sites to be protected.

Our sentry boxes are available in a standard version or can be customised to match site security levels:

- vandal proof,
- intrusion proof as per the EN 1627/1630 and EN 356 standards,
- bullet proof as per the EN 1522 and EN 1063 European standards.



## APPLICATIONS:

- Embassies and government facilities
- Industrial or storage sites
- Military sites
- Mining sites
- Laboratories and research centres
- Nuclear power stations
- Border points
- Prisons
- Ticket vending points

### SIMPLE AND ATTRACTIVE

Our sentry boxes are manufactured to the required resistance levels, while their glazed walls with opaque spandrels and access door ensure maximum transparency and visibility.

Simple yet attractive, these buildings are designed using 3D computer imaging which enables you to visualise them at their intended location and confirm or adjust your preferred dimensions and appearance.

You can also select your cladding (screen printed designs, wood, roughcasting, etc.) according to your architectural preferences or the requirements of the site.

### FUNCTIONAL AND EFFECTIVE

With their insulated walls, insulation glazing and equipment such as ventilation, heating and air conditioning, our sentry boxes ensure maximum comfort and protection against the weather.

The boxes' lifting rings enable easy dismantling and transport, as well as quick and easy installation.

They are installed on galvanised steel plinths to ensure corrosion resistance, accurate positioning, ground anchoring and perfect stability.

### PRE-INTEGRATED EQUIPMENT

Staff can welcome and communicate with visitors through a grill or intercom, and a transfer tray can be installed for the safe exchange of documents.

Depending on your preferences, our sentry boxes' interior fittings can include a desk, seat, electrical wiring and sockets, phone and IT connections, lighting, etc.

### AVAILABLE OPTIONS

Additional options are also available:

- canopy or roof overhang,
- roof cowl,
- outdoor lighting,
- access control,
- CCTV.





- Embassies and government facilities
- Industrial or storage sites
- Military sites
- Mining sites
- Laboratories and research centres
- Nuclear power stations
- Border points
- Prisons
- Ticket vending points



# SECURITY BUILDINGS



**FOR SECURE ACCESS  
CONTROL AND RECEPTION**

# SECURITY BUILDINGS

## BESPOKE MODULAR BUILDINGS



### FOR SECURE ACCESS CONTROL AND RECEPTION

Our buildings are customised to your architectural and technical requirements and meet the most stringent provisions of your specifications. Our security buildings ensure ongoing access control and monitoring of the entrances to your protected sites.

Our security buildings are made to measure in accordance with the French building codes (DTU) and using all the Modulo Protect know-how.

Single or multiple-module units are available according to your space requirements.

Security buildings can measure up to 13 x 4 x 4 metres, meaning they can be transported by road.

They are fitted with lifting rings for crane handling and accurate positioning, and are anchored by our specialists.

Our prefabs are freestanding and made with galvanised steel profiles for high corrosion resistance and building stability as well as to ensure a long life.

Our design and engineering department uses a calculation note to determine the building's resistance, which is then reviewed by an external approved body to ensure it meets the Eurocode construction standards, CM66, etc.



### TOTAL SECURITY

The building perimeters can also be designed to meet specific security requirements.

→ vandal-proofing and intrusion-proofing as per the EN 1627/1630 and EN 356 standards,

→ bullet-proofing as per the EN 1522 and EN 1063 European standards,

→ proofing against Atex risks and blast-proofing.

→ fire-proofing as per European standard Euroclass EN 13501-2.



## APPLICATIONS:

- Industrial sites
- Storage sites
- Military sites
- Nuclear power stations
- Laboratories and research centres
- Border points
- Ticket vending points

### EXTERIOR DESIGN

The projects are designed using Autodesk 3D computer imaging. You will be able to view computer images of both the interior and exterior to enable you to confirm or adjust your technical and architectural preferences and optimise your investment.

The outer walls of the prefabs are made from steel, aluminium or even stainless steel if the unit is to be used in challenging environments (harsh, saline, etc.).

You can also select your cladding (screen printed designs, wood, roughcasting, etc.) according to your architectural preferences or the conditions imposed by the heritage authorities.

Reception and communication with visitors take place at an indoor counter, through a sliding window or through a closed window with an intercom and transfer tray for document exchange.

The combination of walls, doors and frames ensures compliance with the indoor and outdoor safety and security provisions of your specifications as well as the required thermal performance, from the most basic to RT 2012 level.

Optional features are available, such as:

- canopy over entrance,
- roof,
- lifeline, guard rail, caged ladder to roof,
- access platform and ramp,
- etc.

### INTERIOR DESIGN

For quick commissioning, security buildings are usually fully pre-fitted in-plant with:

- electrical equipment with panels, cable ducts, and power sockets, inspected by an external approved body for compliance with NFC15100,
- phone and IT pre-cabling with certification,
- appropriate indoor and outdoor lighting,
- heating, air conditioning, CMV, all designed using calculation notes,
- worktop, furniture, cupboards or shelving made to measure by our carpenters, etc.

The following are also available:

- special floors with added support to bear heavier loads,
- intruder alarm, fire alarm, CCTV, access control,
- security entrance with integrated control of doors, safes, etc.,
- kitchenette, WCs and washbasins, lockers, etc.

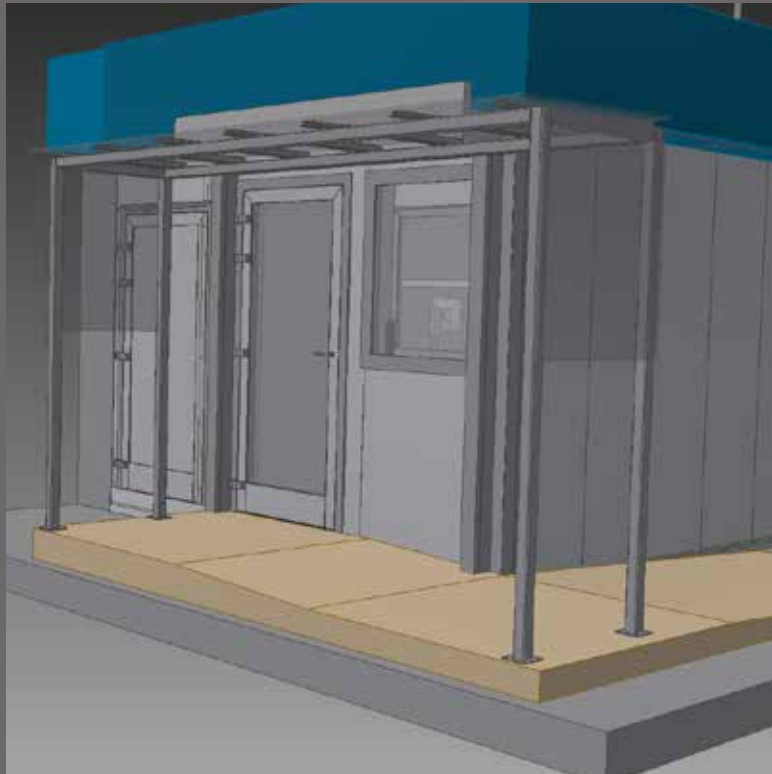
### OUR SERVICES +

Modulo Protect can also take charge of the following:

- issuance of building permit,
- pre-installation of specific equipment purchased from another supplier and which can be delivered and stored at our plant. For instance: ATMs, safes, etc.

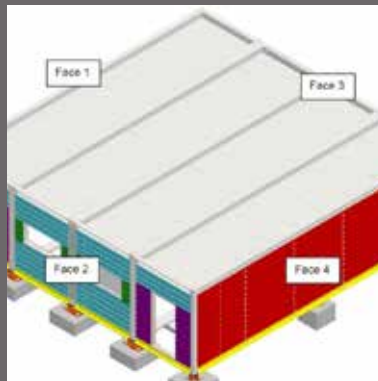
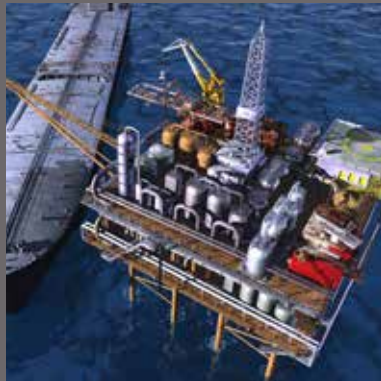






- Industrial sites
- Storage sites
- Military sites
- Nuclear power stations
- Laboratories and research centres
- Border points
- Ticket vending points

# TECHNICAL BUILDINGS



**COMPLIANCE WITH ALL  
YOUR SPECIFICATIONS**

# TECHNICAL BUILDINGS

## BESPOKE MODULAR BUILDINGS



## NO LIMITS TO YOUR SPECIFICATIONS

Our technical buildings are made to measure in accordance with the French building codes (DTU) and using all the Modulo Protect know-how.

Single or multiple-module units can be designed according to your space requirements. Our technical modules can measure up to 15 x 4 x 4 metres each, meaning they can be transported by road or sea.

They are fitted with lifting rings for crane handling and accurate positioning, and are anchored by our specialists. Our prefabs are freestanding and made with galvanised steel profiles for high corrosion resistance and building stability as well as to ensure a long life.

Our design and engineering department uses a calculation note to determine the building's resistance, which is then reviewed by an external approved body to ensure it meets the Eurocode construction standards, CM66, etc.



### TOTAL SECURITY

The building perimeters can also be designed to meet specific security requirements:

- Vandal-proofing, intrusion-proofing or bullet-proofing,
- proofing against Atex risks and blast-proofing.
- fire-proofing as per European standard Euroclass EN 13501-2,
- A60 for standard maritime applications as per IMO resolution A.754(18).



## ONGOING OPTIMISATION FROM DESIGN TO INSTALLATION



## APPLICATIONS:

- Telecommunications
  - Weather stations
  - Motorways (matrix signs, etc.)
  - Industrial analysis and control
  - Laboratories, petrochemical
- industry
  - Railways
  - Maritime applications
  - Military applications
  - White rooms (IT, medical)

### INTERIOR DESIGN

For quick commissioning, technical buildings are usually fully pre-fitted in-plant with:

- electrical equipment with cabinets, cable ducts, and power sockets, and inspected by an external approved body for compliance with NFC15100,
- phone and IT pre-cabling with certification,
- appropriate indoor and outdoor lighting,
- heating, air conditioning, CMV, all designed using calculation notes,
- fold-away worktops, furnishings, cupboards, shelving, etc.

The following are available:

- special floors, cupboard extension seating,
- secure cable transits, e.g. Roxtec,
- gas extinguishing system, intruder or fire alarm, CCTV, access control, electric locks, integration of doors with alarms, etc.,
- WCs and washbasins.

### EXTERIOR DESIGN

The projects are designed using Autodesk 3D computer imaging. You will be able to view computer images of both the interior and exterior to enable you to confirm or adjust your technical and architectural preferences and optimise your investment.

The outer walls of the prefabs are made from steel, aluminium or even stainless steel if the unit is to be used in challenging environments (harsh, saline, etc.).

You can also select your cladding (screen printed designs, wood, roughcasting, etc.) according to your architectural preferences or the conditions imposed by the heritage authorities.

The combination of walls, doors and frames ensures compliance with the indoor and outdoor safety and security provisions of your specifications as well as the required thermal performance, from the most basic to RT 2012 level.

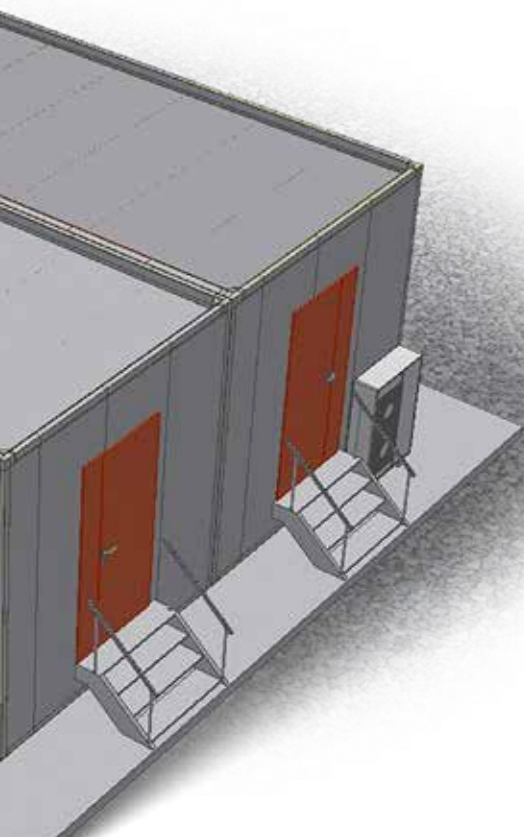
Optional features are also available, such as:

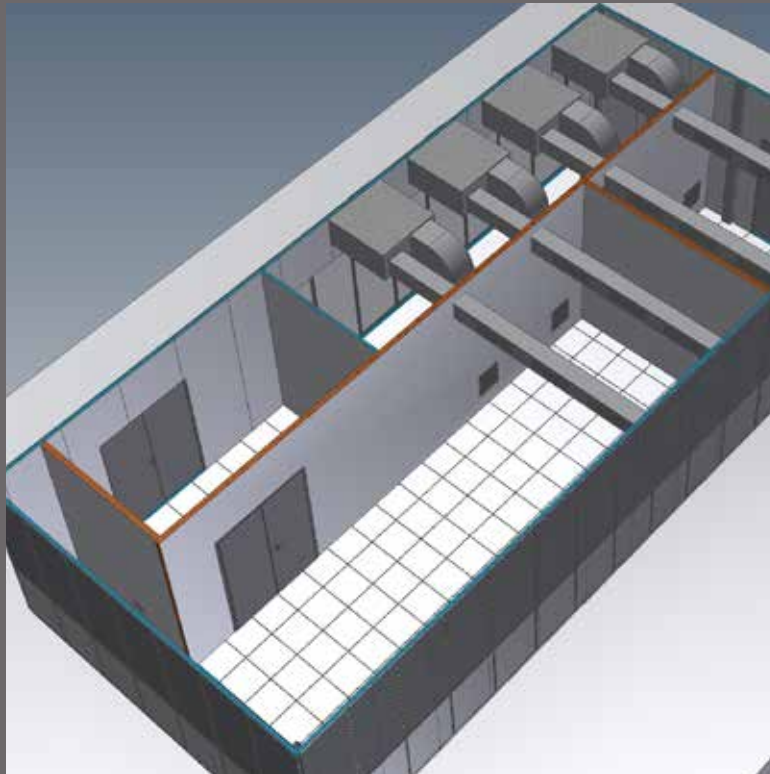
- canopy over entrance,
- roof,
- lifeline, guard rail,
- caged ladder to roof,
- access platform and ramp,
- perimeter fencing,
- etc .

### OUR SERVICES +

Modulo Protect can also take charge of the following:

- issuance of building permit,,
- foundation building and civil engineering,
- pre-installation of specific equipment purchased from another supplier and which can be delivered and stored at our plant.





- Telecommunications
- Weather stations
- Motorways (matrix signs, etc.)
- Industrial analysis and control
- Laboratories, petrochemical
- industry
- Railways
- Maritime applications
- Military applications
- White rooms (IT, medical)

# ANALYSIS STATIONS



**ANYWHERE  
AND IN ALL WEATHERS**



# ANALYSIS STATIONS

## OUR BESPOKE TURNKEY SOLUTIONS



### MODULO PROTECT MEETS YOUR EXACT REQUIREMENTS

Are you planning to invest in an analysis station?  
We can comply with all your specifications.

#### Concept

We use freestanding monolithic insulated sandwich panels assembled with structural adhesives. This is a widely recognised technology. Our products' design ensures that your station is well-insulated, free of thermal bridging and suited to your geographical location.



### CABINET

For specific analyses in restricted spaces:  
weather cabinet

- A moveable and handleable version is available: with a small trailer frame, a chassis with fork frame, etc.



### FIXED STATION

Spacious and suitable premises for multiple  
analysis types

- These stations are integrated into their environment: wooden cladding, roughcast walls, roof, graffiti-proofing, etc.
- Far lighter than traditionally built stations with metal or concrete frameworks:
  - Lower lifting costs due to light weight and easy handling,
- Can be adapted to operating requirements (Atex zone, fire-proofing, intrusion-proofing, etc.).

## SEVERAL OPTIONS ACCORDING TO YOUR REQUIREMENTS:

1. Cabinet
2. Fixed station
3. Mobile station
4. Multiple-use station

Using your project design, our project manager will advise you on the solutions that best match your needs. Our design and engineering staff will then produce 3D images and 2D drawings.

## THE ADVANTAGES OF MODULO PROTECT STATIONS:

- Made to measure according to your specifications,
  - Hot-dip galvanised frame,
  - Freestanding floor with your specified load resistance,
  - Outstanding resistance to harsh environments: saline, urban, chlorinated, sulphurous or otherwise chemically aggressive,
  - Can be adapted to your requirements,
  - Easy to clean, white-room environment,
  - Customised integration: electricity, air conditioning, furnishings, transportation to site and lifting, etc.
- Safety: appropriate guard rail: fixed, foldable or removable.



## MOBILE STATION

### For easier sampling

- Approved trailer frame to match driving licence type and specified GVM,
- Ideal for measurement campaigns at multiple sites.



## MULTIPLE-USE STATION: MODUL'AIR

### Designed with the assistance of AASQA (the French air-quality monitoring network) for multiple uses (fixed or mobile station)

- The unit is easily unloaded with a tilting plate and winch,
- Height adjustable legs for levelling,
- A single trailer frame for several units,
- Requires only a Passenger Carrying Vehicle licence,
- Frame approved for 750 kg GVM,
- Available in several sizes and for several GVMs according to your requirements.





- Water, air, noise, etc. analysis laboratory
- White room for IT
- Secure and observation shelters
- Technical building



# BLAST PROOF

BY MODULO PROTECT



**ANTICIPATE THE WORST**  
**TO ENSURE THE BEST**

# BLAST PROOF MODULAR BUILDING



## MODULO PROTECT BLAST PROOF THE ULTIMATE MODULAR PROTECTION

This range is designed to protect your equipment and staff from fire, hazardous substance penetration, Atex-type accidental explosions (Directive 1999/92/EC), or worse (e.g. terrorist attacks).

Like our other ranges, these prefabs are made to measure and according to your requirements and projects.

### Applications:

- chemical plants or laboratories,
- oil or gas refineries,
- embassies and government facilities,
- defence facilities, military and police buildings, etc.

## ANTICIPATE THE WORST...

Modulo Protect designs comfortable, resistant modular buildings which comply with the safety and security provisions of your specifications.

### The design of our building structures depends on the following factors:

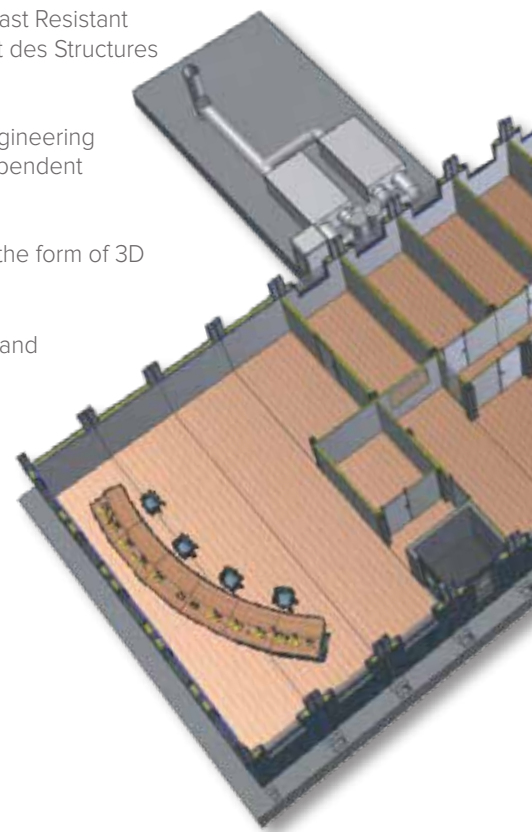
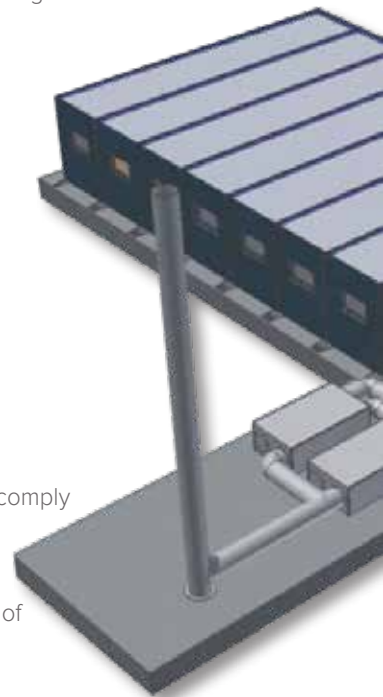
- pressure wave (incident pressure), reflection coefficient and duration of signal with permitted level of damage: Low, Medium, High,
- toxic or hazardous vapour tightness,
- fire resistance,
- Calculation analysis method: as per ASCE Design of Blast Resistant Buildings in Petrochemical Facilities or "Comportement des Structures Soumises à une Explosion" (L. Paris, 2010).

The design as a whole is produced by our design and engineering department and supplied for review to a specialised independent external body.

The study may be designed and previously presented in the form of 3D computer images of the exterior and interior.

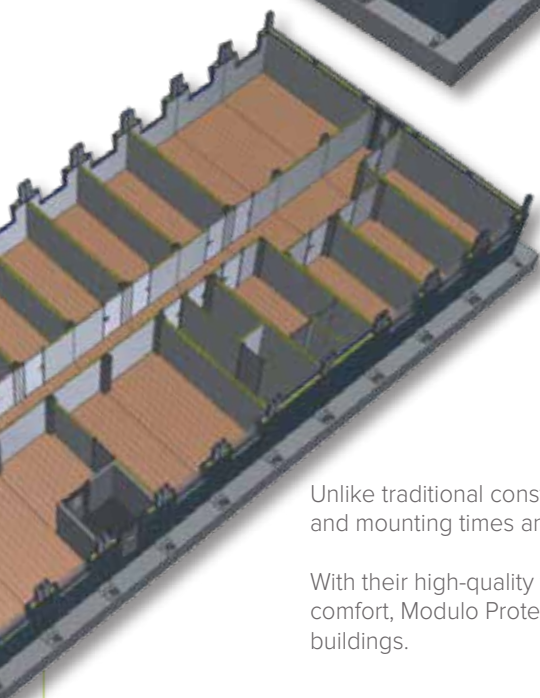
The buildings also comply with the current administrative and government construction standards.

- French building codes (DTU) or Eurocodes,
- CM 66, Snow and wind, Seismic design,
- disabled access,
- energy efficiency.



## THE MODULO PROTECT BUILDINGS ARE ENTIRELY MANUFACTURED AND PRE-MOUNTED AT OUR PLANT

- perfectly dimensioned metal structure,
- blast proof window, door and integrated security entrance frames EN 13123 and 124-1 certified,
- architected or panel cladding,
- appropriate tightness, pressurisation, air treatment, air regulation and air conditioning,
- gas or other detection equipment,
  - HV and LV facilities inspected by a certified body,
  - WCs, kitchenette, furnishings.



Your buildings can be designed, tested and pre-accepted at our plant in Alsace before being dismantled and transported to your site.

All buildings will then be reinstalled at the agreed location. They can, if necessary, be moved at a later date.

(Transport by normal or special transport and installation on site with appropriate cranes further to a study of your planned location).

Unlike traditional construction, prefabrication minimises on-site implementation and mounting times and saves a great deal of money on building costs.

With their high-quality finish and excellent acoustic, thermal and climate comfort, Modulo Protect prefabs ensure the same experience as traditional buildings.

3D computer images,  
outdoor and indoor







- Chemical plants or laboratories
- Oil or gas refineries
- Embassies and government facilities
- Defence facilities, military and police buildings, etc.

## NOTES:



Since its foundation in 2003, Modulo Protect has been manufacturing pre-installed, bespoke and secure modular buildings.

As integrators, we offer buildings that meet the most stringent specifications and comply with the current French and European standards.

Our strong point is our team of qualified staff, who design bespoke, turnkey buildings and work to deadline while emphasising quality to ensure full customer satisfaction.



MODULO PROTECT SUPPORTS THE MAJOR VALUES OF SUSTAINABLE DEVELOPMENT, INNOVATION AND SUSTAINABILITY IN THE CHOICE OF ITS RESOURCES AND OF ENVIRONMENTALLY FRIENDLY PRODUCTION METHODS.

